

20
YEARS STRONG

GUILFORD GREEN
FOUNDATION

ANNUAL REPORT (2015 - 2017)

OUR MISSION To courageously unite and strengthen our entire community by strategically advancing LGBTQIA initiatives through philanthropy.

OUR VISION

We envision a Greater Greensboro with a thriving LGBTQIA community that elevates all.

THANK YOU TO OUR CORPORATE SPONSORS!

1618 Concepts

Cone Health Foundation

Kotis

PNC Bank

Volvo

Lincoln Financial

Polo Ralph Lauren

Yamamori, Ltd.

Makers 46

Quaintance Weaver

PACE

Party Chick & Paper

Well Spring

Replacements

Morehead Foundry

Greensboro Orthopaedics

Rosemary Ireland Curry CPA

Scrambled

AM Rodeo

GUILFORD GREEN FOUNDATION TIMELINE (2015-2017)

2015

OCTOBER 2015
Board votes to create the LGBTQ Community Center of Greensboro.

OCTOBER 2015
More than \$54,000 was awarded in grants to the following organizations:

- Alamance Pride WECAHN
- Guilford College Bayard Rustin Conference
- Community Theatre of Greensboro
- Equality NC
- FaithAction International House
- Interactive Resource Center
- Kaleidoscope
- NC Trans Pride
- NCCJ Anytown
- PFLAG Greensboro Leadership
- Triad Friends
- Triad Health Project
- Triad Pride Men's Chorus
- UNCG Queer Student Union
- UNCG Speech & Hearing
- YouthSafe



2016

FEBRUARY 2016
1st Annual Red Party
Our inaugural Red Party (previously the Women's Party) was held at the Kress Terrace in downtown Greensboro. Nearly \$5,300 was raised.



MARCH 2016
2016 Gala & Green Party
More than 440 people attended the Hollywood-themed 2016 Gala at the Proximity Hotel in Greensboro. We raised more than \$63,000.

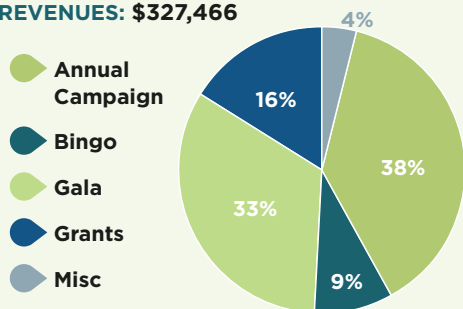
APRIL-MAY 2016
Guilford Green Foundation kicks off fight against HB2.

- Gala Award Winners:**
- Cecelia Thompson**
Dawn S. Chaney Award
 - Michelle Kennedy**
GGF Distinguished Leadership Award
 - Rev. David Fraccaro**
GGF Distinguished Service Award
 - Christopher Sgro**
GGF Visionary Award

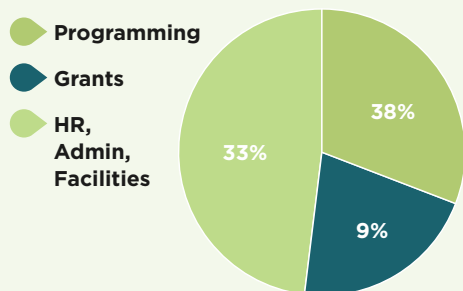
FINANCIAL SUMMARY

2015 - 2016

REVENUES: \$327,466

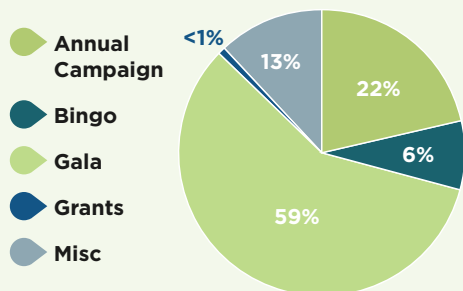


EXPENSES: \$267,483

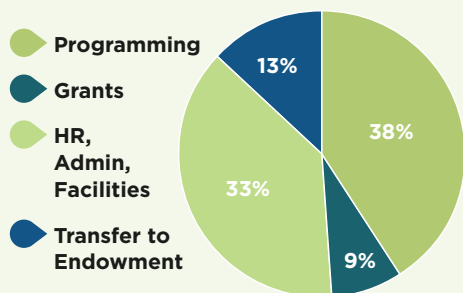


2016 - 2017

REVENUES: \$315,412



EXPENSES: \$351,244



2016
(CONTINUED)



**OCTOBER 2016
Masquerade Ball**
Our 2016 Halloween Takeover and Masquerade Bash was held at GIA. We had around 100 guests and raised over \$4,600.



**FEBRUARY 2017
2nd Annual Red Party**
The second annual Red Party was held on February 25, 2017, at The Public, a new event venue in downtown Greensboro. We had more than 100 attendees and over \$1,500 was raised.

2017



**MARCH 2017
The Guilford Green Foundation Moves to a New Office**
The Guilford Green Foundation office relocated to:
1205 W. Bessemer Avenue,
Suite 226
Greensboro,
North Carolina

**MARCH 2017
2017 Gala & Green Party**
Our 2017 Gala was themed Prohibition and held at the newly-renovated Cadillac Service Garage in downtown Greensboro. Our Gala was the first major event held at this venue. More than 375 people attended, raising more than \$72,000.



Gala Award Winners:
Marikay Abuzuaiter
Dawn S. Chaney Award
Nick Willson
GGF Distinguished Leadership Award
Tony Doles
GGF Distinguished Service Award
Matt Hirschy
GGF Visionary Award

APRIL 2017
The Guilford Green Foundation wins a \$50,000 grant from Tech Triad to upgrade all technology systems.

**JUNE 2017
Transformative Granting**
Three larger, impact grants totalling \$25,000 were awarded to the following organizations:

- Hospice and Palliative Care of Greensboro
- NCCJ of the Piedmont Triad
- Planned Parenthood South Atlantic

AUGUST 2017
The Guilford Green Foundation releases a new logo and website.

2015 - 2017 BOARD OF DIRECTORS

Carmen Allen*
Tal Blevins
Ryan Butler
Stacy Calfo
Bert Davis, Jr.
Evelyn Day
Summer Foster*
Ivey Ghee*
Melissa Greer*

Bill Guill
Amy Holcombe
Sabrina Kim Jones
Robbie LaFar
John Lalonde
Barbara Lawrence
Gordon Locke
Susan Lowe
Jessica Mashburn*

Sandra O'Connor
Rob Overman
Sarah Poole*
Callie Schmid*
Melvy Shaw
Jeff Smith
Jeff Sylvester
Jennifer Urana*
Camille Williams

*Term has ended.

ADVISORY COUNCIL

Tom Campbell
Ivan Canada
Dawn Chaney
Jeanine Falcon
Melissa Greer
Susan Lowe



GUILFORD GREEN
FOUNDATION

Guilford Green Foundation,
1205 W. Bessemer Avenue
Suite 226
Greensboro, NC 27408.
ggfnc.org