

# 2012-2013 GRANTS

## Alternative Resources of the Triad - \$1,500

Triad Pride 2013 matching funds

## Triad Friends - \$2,500

Triad Friends House operations costs

## Community Theatre of Greensboro - \$2,000

Production costs and facilitated dialogue for *My Big Gay Italian Wedding*

## Triad Health Project - \$4,500

Higher Ground program support

## Elsewhere Collaborative - \$3,000

Funding for *QLAB*, a youth-led media project

## UNCG PRIDE - \$2,000

Academic year programming support

## Equality NC - \$1,500

2012 Equality Conference and Gala sponsorship

## Wake Forest University Documentary Film Project - \$3,000

Production costs for *Living in the Overlap*

## NCCJ of the Piedmont Triad - \$5,000

LGBT programming for *Anytown* 2013

## Welcome Conversations - \$800

Clergy and lay leader trainings

## PFLAG Greensboro - \$1,350

Funding to increase the visibility and impact of PFLAG Greensboro

## Youth Focus - \$5,500

LGBT competency training for staff and clinicians

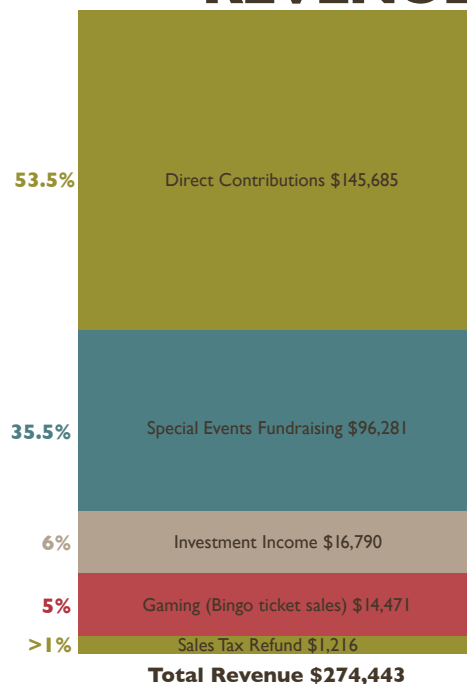
## Southerners on New Ground - \$3,000

Multi-racial LGBT leadership training

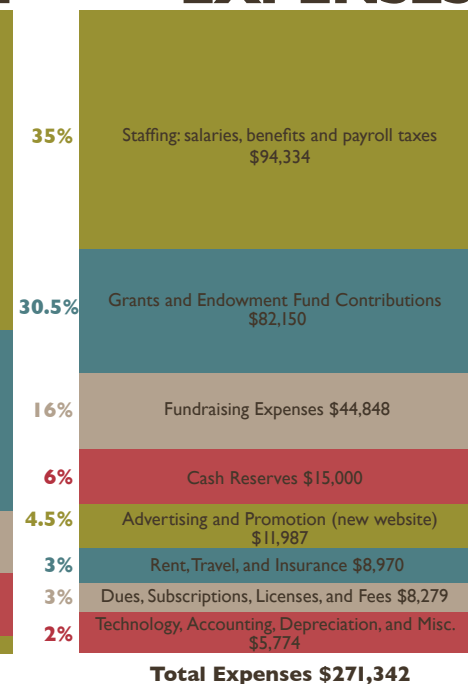
## Contributions to the GGF Endowment - \$45,000

Investing in a sustainable future of funding

## 2012-2013 REVENUE



## EXPENSES



## GGF Endowment



**FUND balance**

The GGF endowment represents a sustainable future of funding for whatever needs arise for the LGBT and allied community. GGF was founded with an eye towards being able to have permanency and sustainability; our endowment will continue to grow and GGF will forever be able to improve the lives of LGBT people in the Triad knowing that there are no limits to what is possible for us in the future.

## 2012-2013 BOARD

**Co-chairs:** Harvey Lineberry  
and Marshand Hager

**At large:** David Andersen,  
Candice Bruton, Tom Campbell,  
Jody Clayton, Tom Ehlers, Justin  
Ervin, Ivey Ghee, Melissa Greer,  
Danielle Hoversten, Kim Jones,  
John Lalonde, Susan Lowe,  
Jamin Marlow Slone, Carol  
McCauley, Sandra O'Connor,  
Charlotte Oleynik, Gary Palmer,  
Neda Pitt, Rusty Powell, Minita  
Sanghvi, Linda Socia, Nick Wyatt

## 2012-2013 advisory BOARD

Bill Baites

Ivan Canada (starting January 2013)  
Dawn Chaney  
Jeanine Falcon  
John Melton

## STAFF

**Shane Burton**  
*Executive Director*

**Jeff Carlson**  
*Administrative Assistant*

**Ivan Canada**  
*Director of Special Projects*  
(ending December 2012)

Guilford Green Foundation is a registered 501-c-3 nonprofit. Our financial return for the 2012-2013 fiscal year was prepared by the independent accounting firm of Breslow Starling.

For more information on our agency, please visit our website at [www.ggfnc.org](http://www.ggfnc.org).

Dear friends of Guilford Green Foundation,

We are pleased to provide you, our community and supporters, with our annual report for the 2012-2013 fiscal year; a snapshot of GGF. However, there is so much more to GGF than can be conveyed in this snapshot. We hope you will use this information as a springboard; your own opportunity to become involved or more involved with GGF. As a true community foundation, we rely on the community to support our mission.

A group of dreamers dreamed big when they envisioned GGF almost 18 years ago; today, their dream is alive and strong thanks to your support. Today, we have made huge strides in uniting community so that we all, LGBT and allied alike, are proud to be a part of our larger community. So much is rapidly changing in our world when it comes to LGBT equality and the fight for that equality, sometimes for the better; sometimes not. While our state is shadowed by a dark cloud of discrimination and inequality through Amendment One, our community shines brighter by your support of GGF and our work; our highest court struck down DOMA this summer and we see more and more acceptance every day. The work continues. The mission of GGF will continue as well, for as long as there are LGBT and allied people living in our community, GGF will be a permanent fixture, leading through philanthropy.

Thank you for being with us on this journey;  
thank you for being part of our legacy.



Shane Burton  
Executive Director



Guilford Green Foundation

u n i t i n g   c o m m u n i t y

PO Box 10428  
Greensboro NC 27404

Non-Profit Org.  
US Postage  
PAID  
Permit No. 698  
Greensboro, NC

Return Service Requested